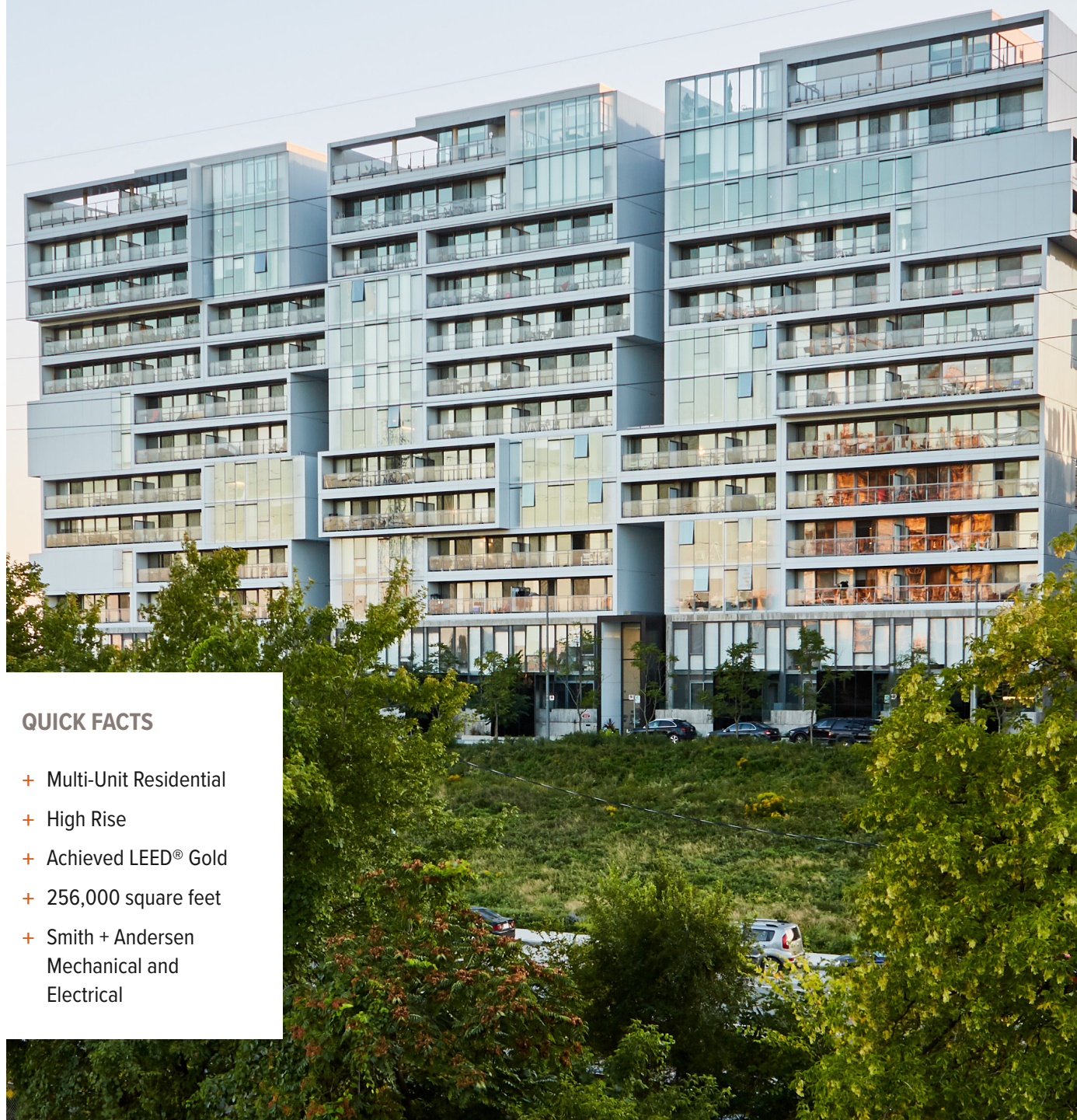




RIVER CITY 2

TORONTO, ON



QUICK FACTS

- + Multi-Unit Residential
- + High Rise
- + Achieved LEED® Gold
- + 256,000 square feet
- + Smith + Andersen
Mechanical and
Electrical



RIVER CITY 2

ABOUT THIS PROJECT

- + Considered the “jewel” of the River City neighbourhood development.
- + The second building in the four-phase project.
- + Features 250 units in three 12-storey luminescent glass towers.
- + Building amenities include a billiards room, a private movie screening lounge, a yoga and meditation area, a fitness centre, and an outdoor pool.
- + Engaged as the mechanical and electrical consultants for the project.
- + The sustainable design included highly-effective boilers, chillers, energy recovery ventilators, and appliances (all contained within the efficient building envelope).
- + A four-pipe fan coil system allows residents to select cooling or heating on demand.
- + Low-flow plumbing fixtures inside and a rainwater storage system outside significantly reduce water consumption on site.
- + Each residential unit is metered to track energy, electricity, and water consumption, allowing owners to be individually billed for their own energy needs.
- + A “kill switch” beside the main door of each unit allows tenants to easily turn off every light in the space, giving them greater control of their energy consumption.

LOCATION
Toronto, ON

**SMITH + ANDERSEN
SERVICES PROVIDED**
Mechanical, Electrical

SIZE
256,000 sq. ft. (23,780 sq. m.)

BUDGET
Confidential

COMPLETION YEAR
2015

SUSTAINABILITY
LEED Gold

HOT BUTTONS

RESIDENTIAL

NEW BUILDING

LEED GOLD

SUSTAINABLE DESIGN

MECHANICAL DESIGN

ELECTRICAL DESIGN

