



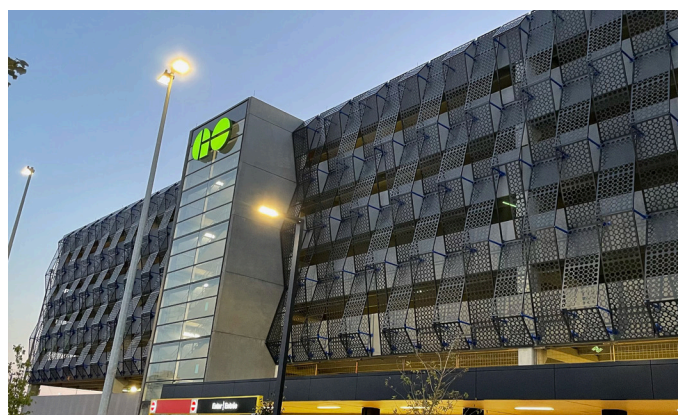
METROLINX BRAMALEA GO STATION REDEVELOPMENT

BRAMPTON, ON



QUICK FACTS

- + Design-Build
- + Multi-Phased Transportation Project
- + 1.25-million Square Feet
- + \$99.17-million Budget
- + LEED® Gold (Target)
- + Smith + Andersen Mechanical, Electrical, and Intelligent Integrated Systems





METROLINX BRAMALEA GO STATION REDEVELOPMENT

ABOUT THIS PROJECT

- + Complete reconfiguration of the existing Bramalea GO Station, adding a six-storey, above grade parking garage (with 2,060 parking spaces), replacing the existing station building, and redeveloping surface parking.
- + The Design-Build project includes the replacement of the existing station building with a larger, linear terminal consisting of a continuous canopy and parking garage integration.
- + Additional features include improvements to and expansion of surface parking and customer waiting areas (passenger pick-up and drop-off), a pedestrian bridge connecting the parking garage and rail platforms, and an expansion of the existing pedestrian tunnel connections.
- + Targeting LEED Gold certification.
- + Features sustainable design such as grid-tied solar photovoltaic arrays that cover the roof of the parking garage.
- + Platform redevelopment consists of improved vertical access connections (including elevators and stairs), a side platform, an expansion of the existing island and side rail platforms, and renovations to existing platform shelters (as well as additional shelters).
- + Introduced a bus loop with increased capacity for GO and Brampton Zum buses (12 GO buses and two Zum buses), covered bicycle racks and secured parking, a vehicle counting system for the parking garage, and site access points (including signalized intersections).
- + Redeveloped station building includes ticketing and waiting areas, a driver's lounge, integrated retail spaces, platform connections, and service spaces.
- + Station building and parkade both accommodate electric vehicle charging stations.
- + Design features include the installation and expansion of various customer-facing systems (including Metrolinx public address, CCTV, PINS digital signage, WiFi, and fare systems), upgrades to electrical service and emergency generator capacity, and an expansion of electrical rooms.

LOCATION
Brampton, ON

SMITH + ANDERSEN
SERVICES PROVIDED
Mechanical, Electrical,
Intelligent Integrated Systems

SIZE
1,250,000 sq. ft. (116,129 sq. m.)

BUDGET
\$99.17 Million

COMPLETION YEAR
2022

SUSTAINABILITY
LEED® Gold (Target)

HOT BUTTONS

DESIGN-BUILD

TRANSPORTATION

MECHANICAL DESIGN

ELECTRICAL DESIGN

SUSTAINABLE DESIGN

RENOVATIONS

EQUIPMENT UPGRADE

LEED GOLD