



MANULIFE CENTRE REDEVELOPMENT

TORONTO, ON



QUICK FACTS

- + Revitalization Project
- + Mixed-Use Commercial Space
- + 125,000 square feet
- + \$100-million Budget
- + Smith + Andersen Mechanical



PHOTO CREDIT: Rendering Courtesy of B+H Architects



MANULIFE CENTRE REDEVELOPMENT

ABOUT THIS PROJECT

- + Revitalization includes a replacement of the existing façade with a glass façade and will add 38,000 square feet of new retail space on the ground and second floor.
- + Upon completion, Manulife Centre will be home to various tenants including Canada's first Eataly, taking up a total of 50,000 square feet spread across three storeys within the centre.
- + Other interior and exterior renewals include updated lobbies, redeveloped circulation scheme and an addition of 38,000 square feet of new ground and second floor retail space.
- + Heating and cooling demand for the new glass façade is an ultra-low profile HVAC design featuring four-pipe fan coil units.
- + Supply air is delivered to the space through a trench recessed in the slab below, and return air slots are inconspicuously located on the side of the ceiling bulkhead.
- + Chiller plant upgrades and an added air handling unit allow for the current mechanical systems to meet increased cooling and ventilation demands.
- + Newly renovated entrances that are being provided with dedicated vestibule pressurization air handling units to limit the infiltration of unwanted outdoor air.

LOCATION
Toronto, ON

**SMITH + ANDERSEN
SERVICES PROVIDED**
Mechanical

KEY TEAM MEMBERS
B+H Architects

SIZE
125,000 sq. ft. (11,612 sq. m.)

BUDGET
\$100 Million

COMPLETION YEAR
2019

HOT BUTTONS

OFFICE BUILDING

RETAIL STORES

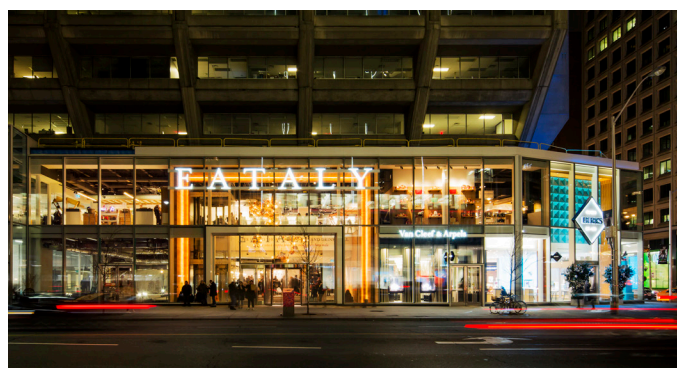
ADDITIONS

RENOVATIONS

UPGRADES

MECHANICAL DESIGN

HVAC



PHOTOS COURTESY OF EATALY